

Rovaniemi- the Arctic Capital of Finland



The Success Story of Rovaniemi

Mayor Esko Lotvonen



Rovaniemi

THE OFFICIAL HOMETOWN
OF SANTA CLAUS®

- **Location** *Finland, Lapland, the Arctic Circle*
- **Area** *8 000 km² – Largest city in Europe*
- **Population** *61 515 inh. 15. largest city in Finland, 5th biggest arctic city*



• **Rovaniemi**

• 66° 33' 39" (2000)

• **Helsinki**

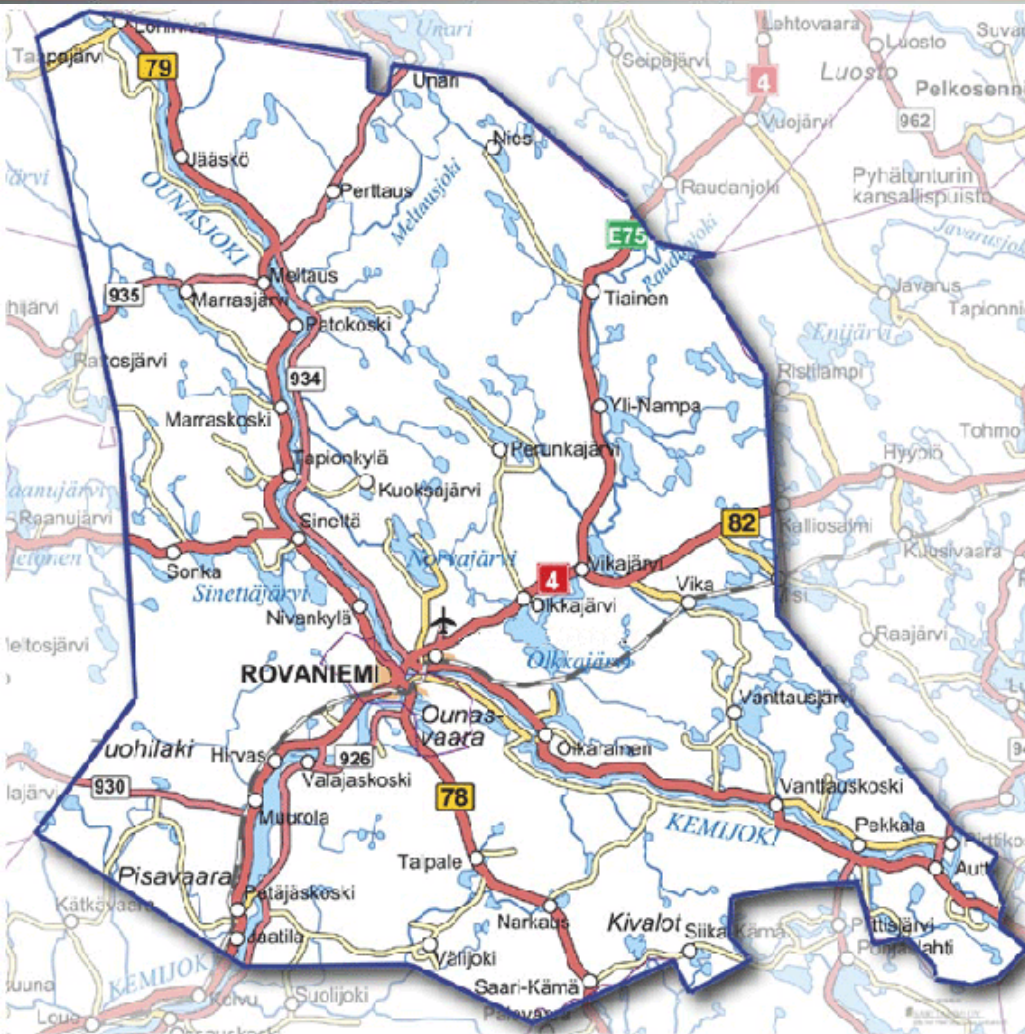
• **St. Petersburg**

• **Stockholm**

• **Tallinn**

Rovaniemi Rivers and extensive land area

THE OFFICIAL HOMETOWN
OF SANTA CLAUS®



Location in the crossing of
two biggest Finnish rivers
(Kemi-river and Ounas-
river)

Rovaniemi

THE OFFICIAL HOMETOWN
OF SANTA CLAUS®

Rovaniemi in winter

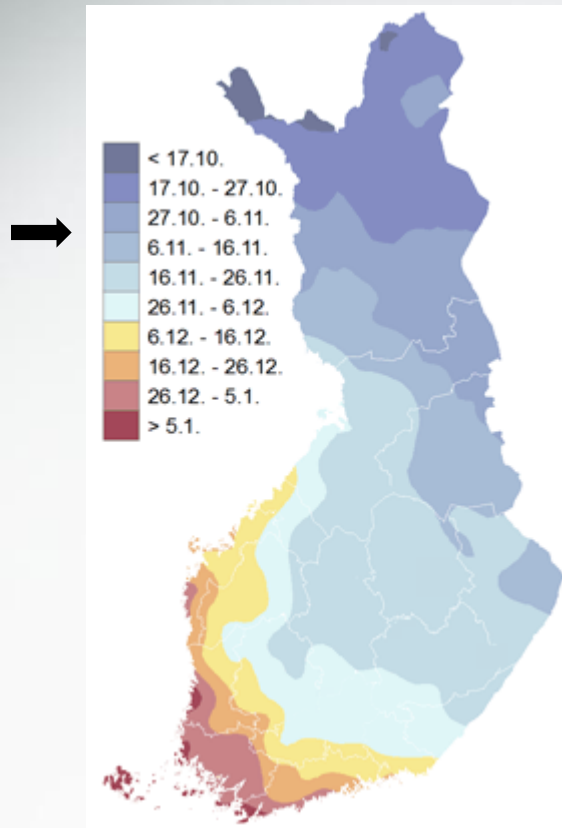


14.1.2015

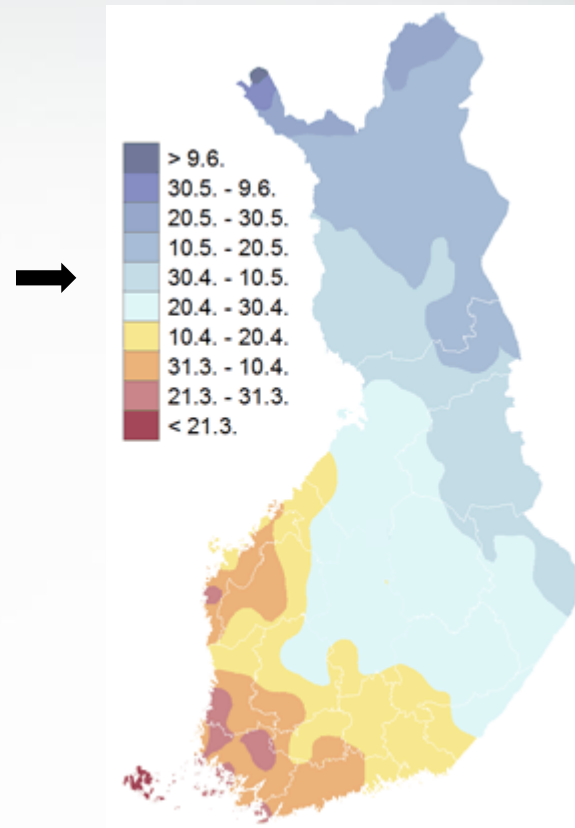
Winter in Rovaniemi

(Finnish Meteorological Institute)

Average starting date of permanent snow cover (1981-2010 normal period)

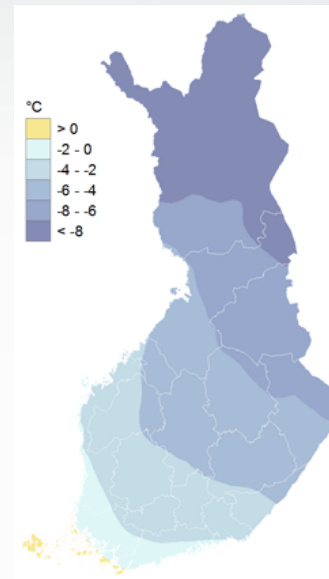
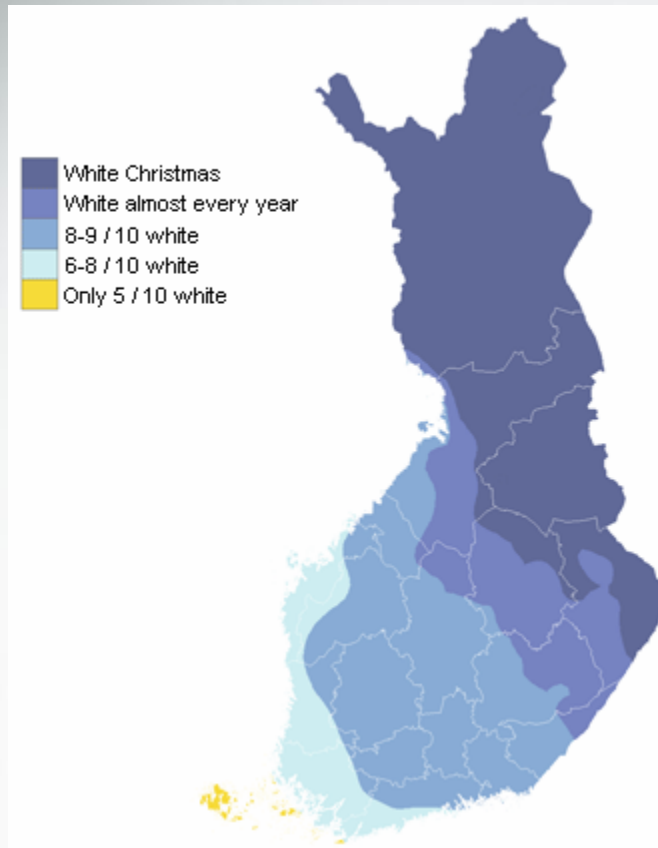


Average ending date of permanent snow cover (1981-2010 normal period)

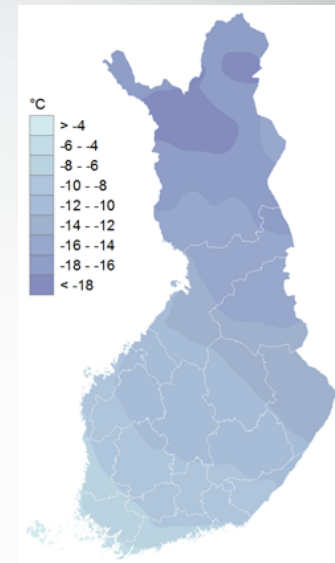


• Rovaniemi is a city with *white and most probably cold* Christmas

Probability of a white Christmas in Finland



Max temp. /Christmas



Min temp. /Christmas

Destruction after the II World War

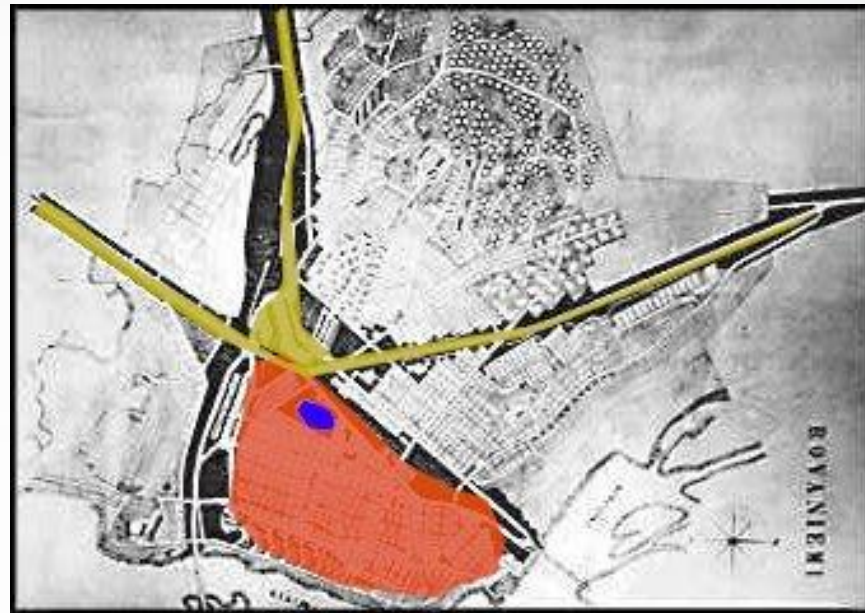
The New Start for the City from ash and ruins



Rovaniemi City Plan by Alvar Aalto



**“Reindeer Antler Plan”,
Designing the plan started 1944 and was
finished in 1946**



Cultural and Administrative Center , Alvar Aalto -centre



**Library (1965),
Lappia Hall (1975),
City Hall (1988)**



- **Zoning:** pedestrian, bicycle, public transportation and car zones (case)
- **Architectural quality:** guidelines for better building quality are attached to local detailed plans
- **Multipurpose housing areas** with high architectural standards

Rovaniemi

THE OFFICIAL HOMETOWN
OF SANTA CLAUS®

Strategies and programmes



Strategy for Land use planning

 Rovaniemi

MAATU

MAANKÄYTÖN JA ASUMISEN TOTEUTTAMISOHJELMA
VALTUUSTOKAUDELLE 2013–2016, TOTEUTUSOSA

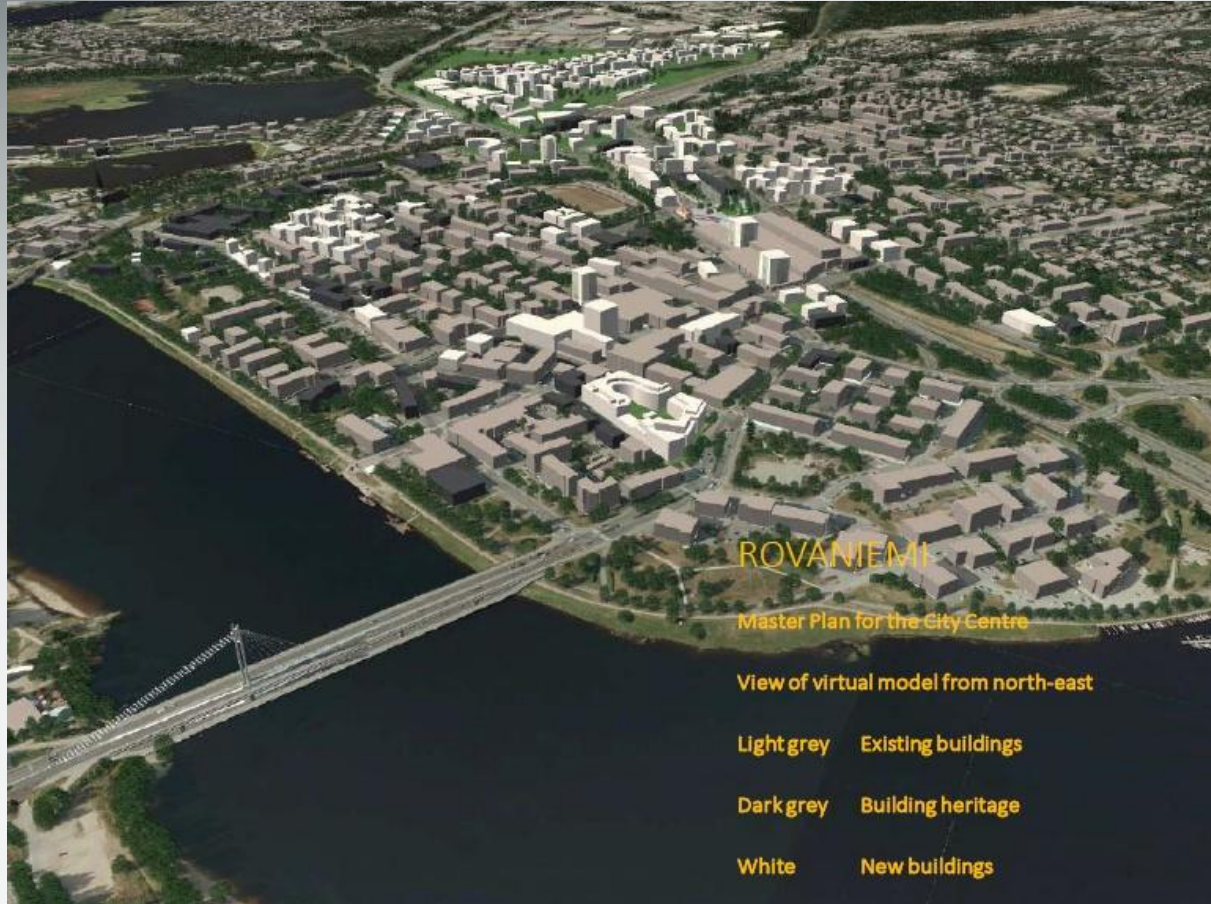


Action plan for Land use
planning and Housing

Käsittely toimitelmissä: Kaupunginhallitus 20.1.2014 §28, Kaupunginvaltuusto 27.1.2014 §13

Innovations

Case: Component Local Master Plan



Arctic Green City Rovaniemi –
A Sustainability Assessment for
Directing Urban Planning

Tuomo Sirkkiä
Leading Consultant,
Lic.Sc. (Tech.), Architect (M.Arch.) SAFA

SITO
When Infrastructure Counts



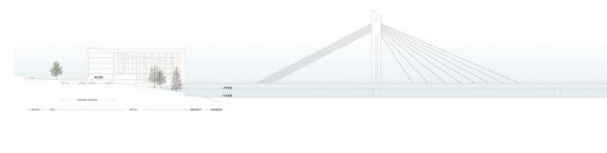
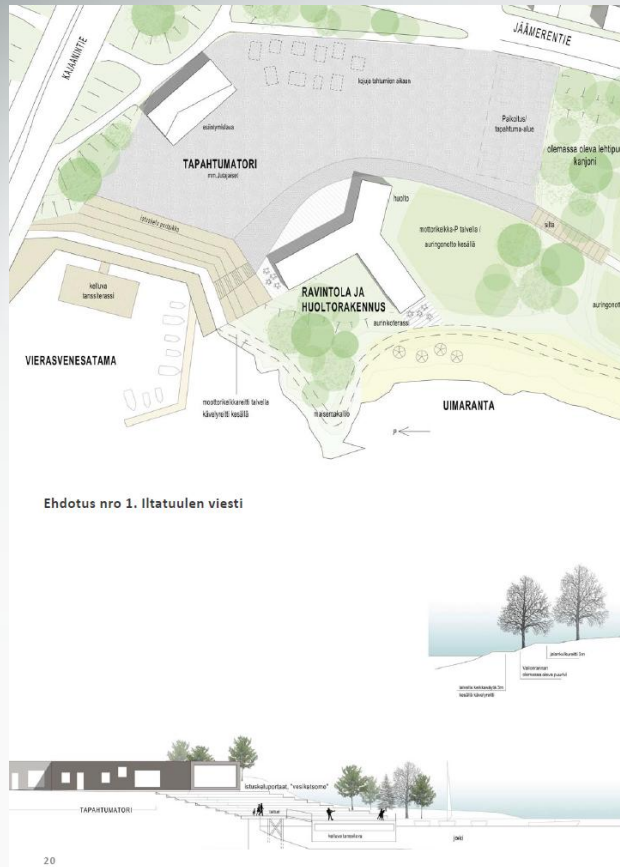


Rovaniemi

THE OFFICIAL HOMETOWN
OF SANTA CLAUS®

New housing areas and public places: promoting well-being

Valionranta-Koskipuisto- Antinpuisto/ Viiri-Ylinenpää Oy



Rovaniemi

THE OFFICIAL HOMETOWN
OF SANTA CLAUS®

Case: Housing area/ Laatio Architects



- Case: Former Headquarters of Border Guard



Rovaniemi

THE OFFICIAL HOMETOWN
OF SANTA CLAUS®

Icefishing in the city center



14.1.2015

Rovaniemi

THE OFFICIAL HOMETOWN
OF SANTA CLAUS®

Case Sportsfield and Auditorium

ARKKITEHTIHUONE APRT OY



RAILO 6/6



Will be finalized in summer 2015
Place for winter activities too
(skiing, skating, mini
snowmobiles, snow
constructions...)

Rovaniemi

THE OFFICIAL HOMETOWN
OF SANTA CLAUS®

Iceroads and usage of old snow



14.1.2015

Snowmobiles and bicycling

In Rovaniemi snowmobile routes and tracks in 2014 :

- Official routes: about 320 km**
- Unofficial tracks : about 700 km**

Regionally and commercially (e.g tourism) important tracks will be official routes in future.

All year round maintained bicycle ways together 141 km



Rovaniemi

THE OFFICIAL HOMETOWN
OF SANTA CLAUS®

Snow mobiling in Lappish nature

(Bombardier Recreational Products)



14.1.2015

Rovaniemi

THE OFFICIAL HOMETOWN
OF SANTA CLAUS®

We love winter!



14.1.2015

Winter is an opportunity !



Rovaniemi

THE OFFICIAL HOMETOWN
OF SANTA CLAUS®

Winter is no obstacle !



14.1.2015

Rovaniemi

THE OFFICIAL HOMETOWN
OF SANTA CLAUS®

First Concorde 1984

Real growth of Christmas tourism begun, before this we closed the hotels for Christmas

BA 9075C



49 direct Concorde - flights in years 1984-2000 to Rovaniemi from London and Paris

Rovaniemi
THE OFFICIAL HOMETOWN
OF SANTA CLAUS®

The Official Hometown of Santa Claus™



14.1.2015



Rovaniemi

THE OFFICIAL HOMETOWN
OF SANTA CLAUS®

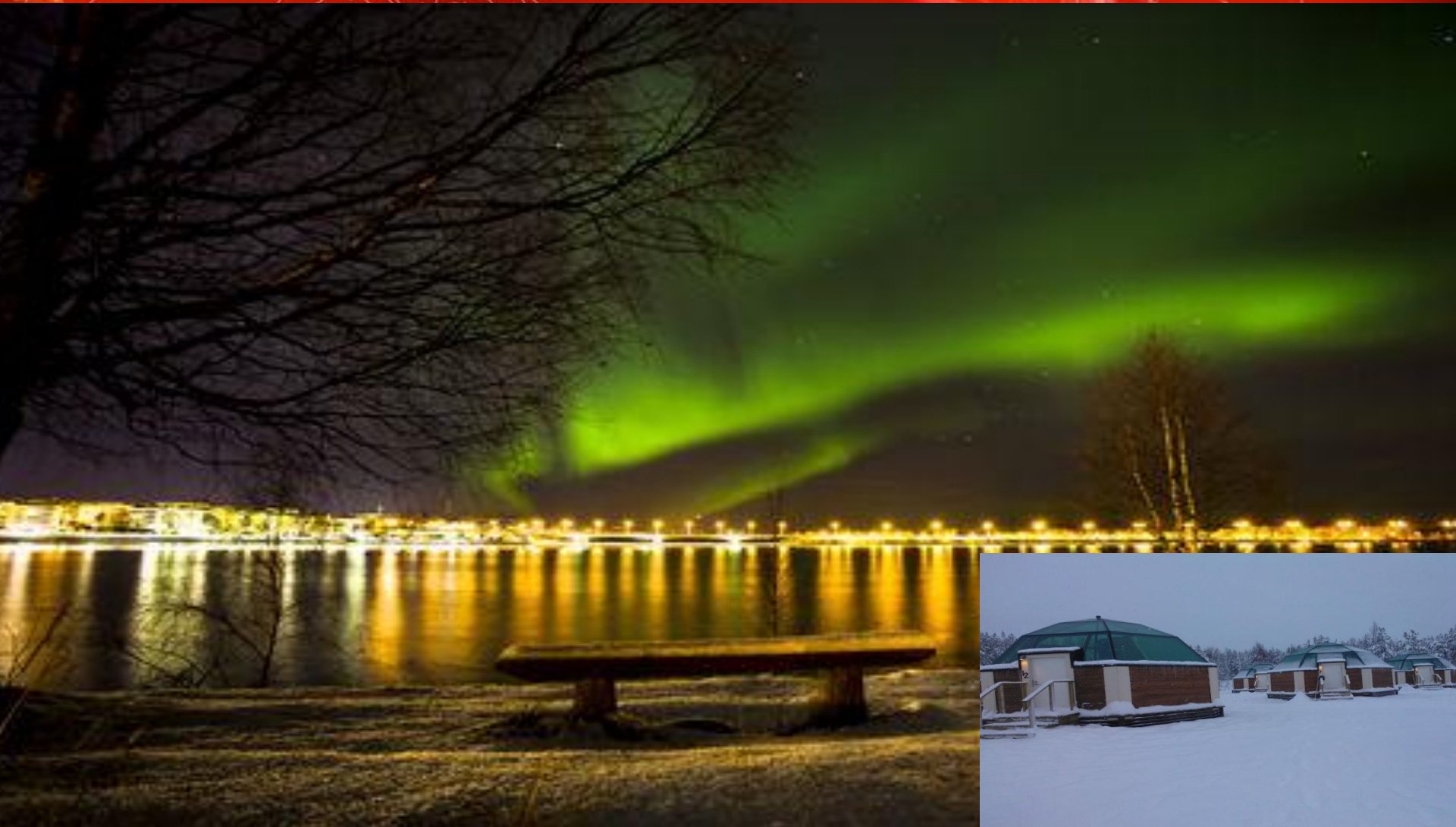
Icehotels, Icebars, Snow constructions



Rovaniemi

THE OFFICIAL HOMETOWN
OF SANTA CLAUS®

Northern Lights above Rovaniemi



14.1.2015

- **Research and Education; University of Lapland (1979), Applied Science University of Lapland (1994), Arctic Centre (1992) and other research institutes (f.ex. Finnish Geological Research Center,**
- **Arctic Design (Faculty of Arts)**
- **Cold climate and winter testing expertise**
- **Mining in arctic conditions**
- **Arctic tourism**
- **Construction and infrastructure in cold climate**
- **Environmental technology**
- **Logistic position**

Rovaniemi

THE OFFICIAL HOMETOWN
OF SANTA CLAUS®



Leading Chinese Politicians visiting
Rovaniemi

- President Xi Jinping (1.) 2010
- Mr Yu Zhengseng (4.) 2013
- Mr Lui Yunshan (5.) 2014

14.1.2015

Arctic Design Week 16-20.2.2015

Arctic Business Forum 11-12.3.2015

In the Spirit of Rovaniemi Process

-conference 24-26.11.2015



Thank you for attention!